





-  City of Medford
-  City of Phoenix
-  City of Talent
-  SR 99 Corridor Focus Area

0 0.6 1.2 Miles
1:50,000 (At original document size of 11x17)



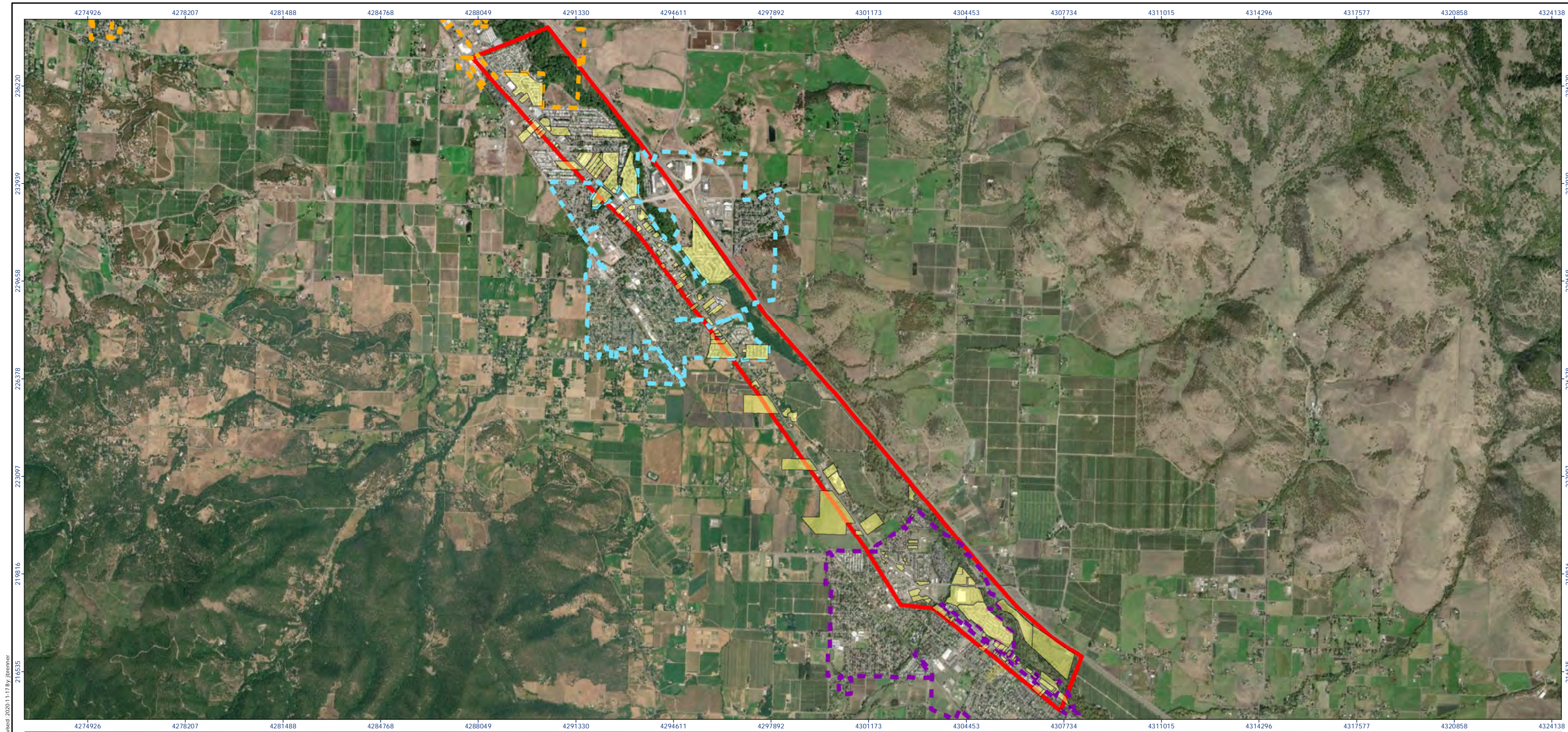
Project Location		185751393
State Route 99 Corridor		Prepared by JB on 2020-10-08
Phoenix and Talent, OR		Technical Review by LF on 2020-10-08
Client/Project		Independent Review by GS on 2020-10-08
RVCOG		
State Route 99 Corridor		
Brownfield Inventory		
Figure No.		
1		
Title		






State Route 99 Corridor Focus Area Location Map

Notes

- Coordinate System: NAD 1983 2011 StatePlane Oregon South FIPS 3602 Ft Intl
- Base features produced under license with the Ontario Ministry of Natural Resources © Queen's Printer for Ontario, 2013.

Disclaimer: Stantec assumes no responsibility for data supplied in electronic format. The recipient accepts full responsibility for verifying the accuracy and completeness of the data. The recipient releases Stantec, its officers, employees, consultants and agents, from any and all claims arising in any way from the content or provision of the data.



-  Potential Brownfields
-  City of Medford
-  City of Phoenix
-  City of Talent
-  SR 99 Corridor Focus Area

0 0.5 1 Miles
1:40,000 (At original document size of 11x17)



Project Location 185751393
State Route 99 Corridor Prepared by JB on 2020-10-22
Phoenix and Talent, OR Technical Review by LF on 2020-10-22
Independent Review by GS on 2020-10-22

Client/Project
RVCOG
State Route 99 Corridor
Brownfield Inventory

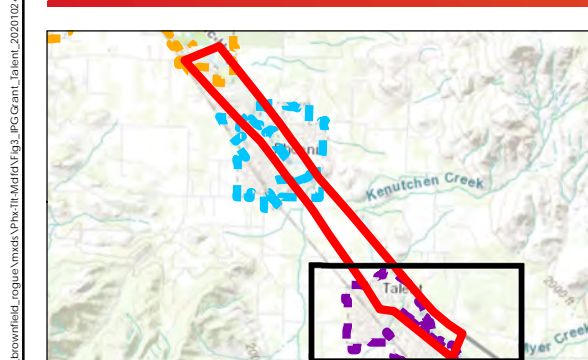
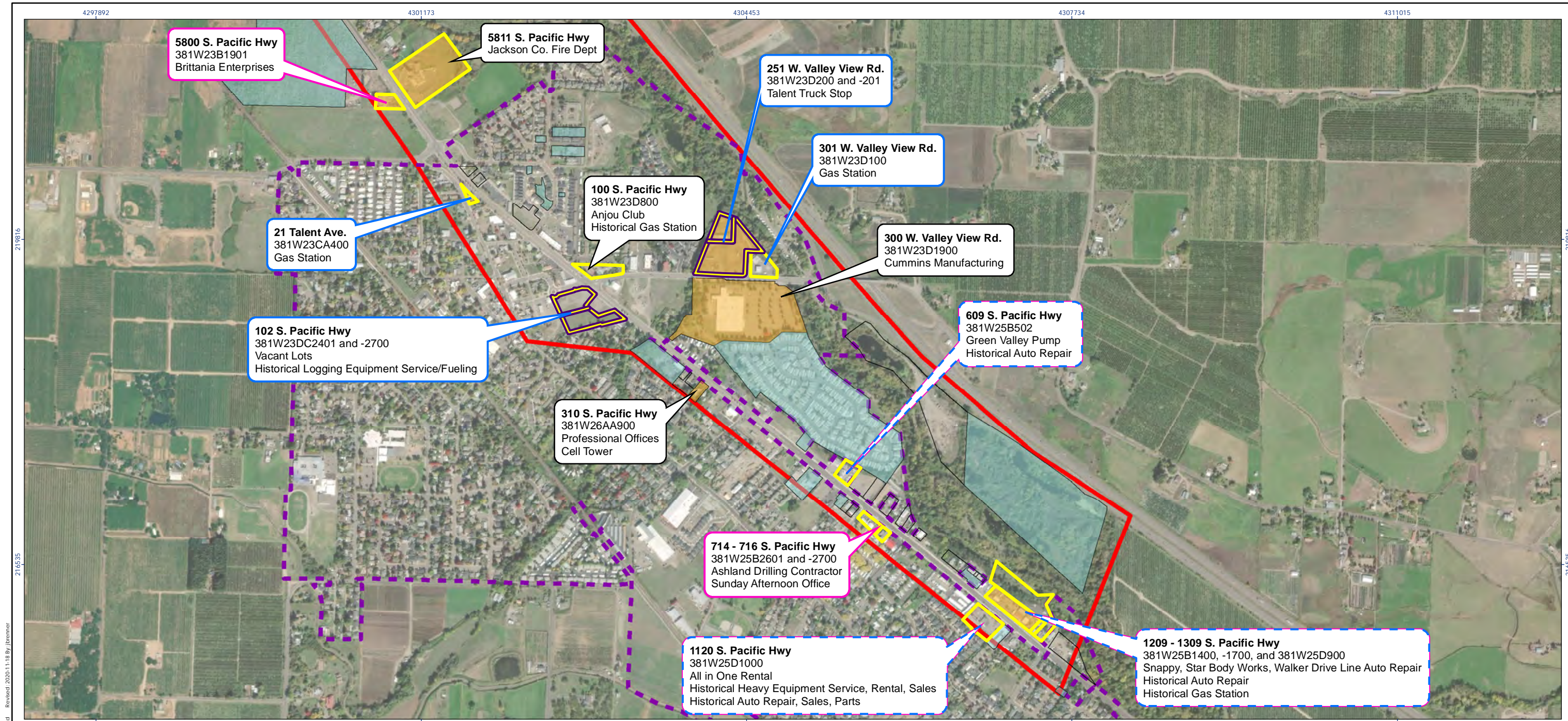
Figure No.
2

Title
State Route 99 Corridor Focus Area
Brownfields Overview Map

Notes

1. Coordinate System: NAD 1983 2011 StatePlane Oregon South FIPS 3602 Ft Intl
2. Base features produced under license with the Ontario Ministry of Natural Resources © Queen's Printer for Ontario, 2013.

Disclaimer: Stantec assumes no responsibility for data supplied in electronic format. The recipient accepts full responsibility for verifying the accuracy and completeness of the data. The recipient releases Stantec, its officers, employees, consultants and agents, from any and all claims arising in any way from the content or provision of the data.



- Active Environmental Record (LUST/ECSI Record)
- Past or Present Petroleum Storage (AST, LUST, UST Records)
- Past or Present Hazardous Substance Storage (HSIS Record)
- Other Environmental Records*
- Potential Brownfields
- City of Medford
- City of Phoenix
- City of Talent
- SR 99 Corridor Focus Area

0 0.15 0.3 Miles
1:12,000 (At original document size of 11x17)

Address
Tax Lot No.
Current/Last Known Business
and Environmental Record
Associated Business or
Land Use

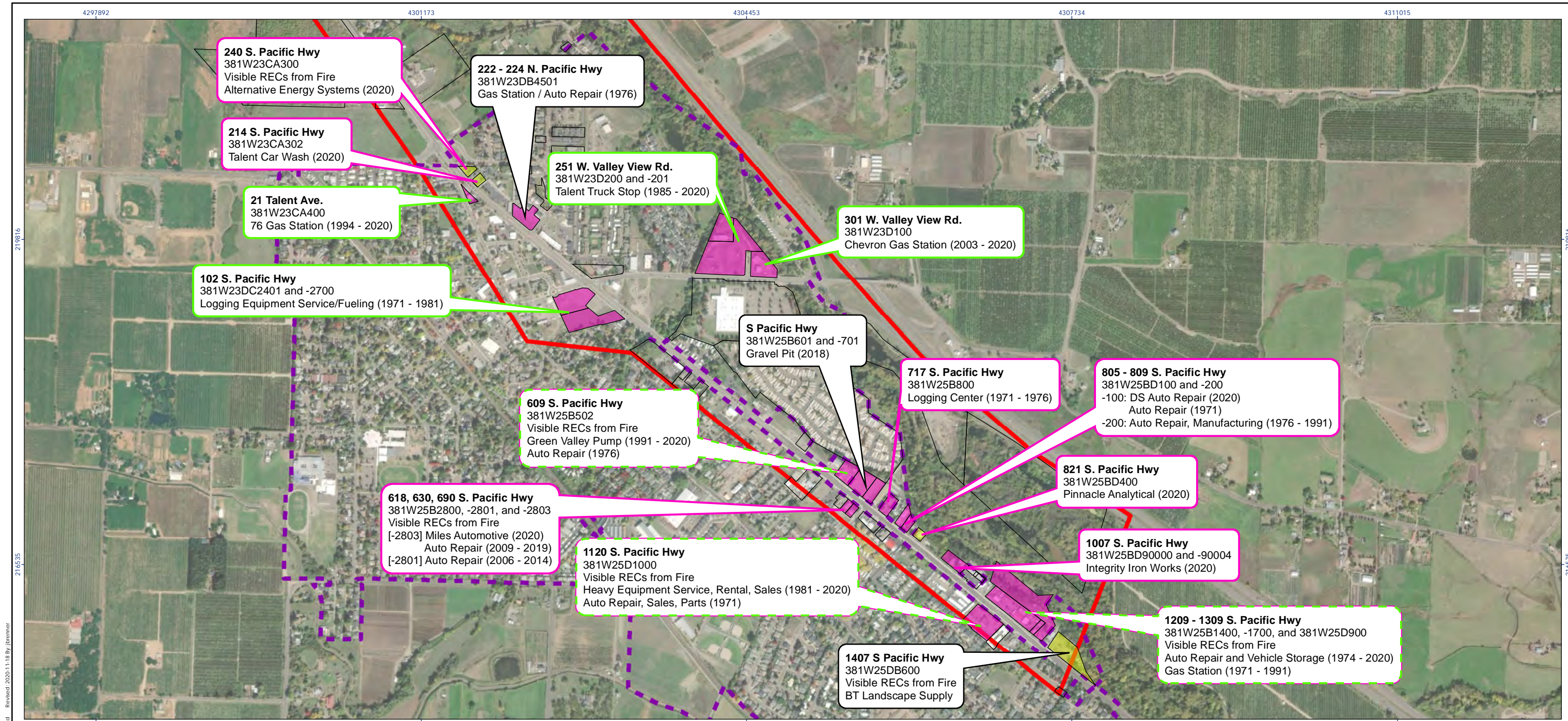
- Has a historical land use of concern
- Has been impacted by fire
- Has a historical land use of concern and has been impacted by fire



Project Location
State Route 99 Corridor
Talent, OR
Client/Project
RVCOG
State Route 99 Corridor
Brownfield Inventory
Figure No.
3
Title

Talent Potential Brownfields
Environmental Records Map

Notes
1. Coordinate System: NAD 1983 2011 StatePlane Oregon South FIPS 3602 Ft Intl
2. Base features produced under license with the Ontario Ministry of Natural Resources © Queen's Printer for Ontario, 2013.
Disclaimer: Stantec assumes no responsibility for data supplied in electronic format. The recipient accepts full responsibility for verifying the accuracy and completeness of the data. The recipient releases Stantec, its officers, employees, consultants and agents, from any and all claims arising in any way from the content or provision of the data.



240 S. Pacific Hwy
381W23CA300
Visible RECs from Fire
Alternative Energy Systems (2020)

214 S. Pacific Hwy
381W23CA302
Talent Car Wash (2020)

21 Talent Ave.
381W23CA400
76 Gas Station (1994 - 2020)

102 S. Pacific Hwy
381W23DC2401 and -2700
Logging Equipment Service/Fueling (1971 - 1981)

222 - 224 N. Pacific Hwy
381W23DB4501
Gas Station / Auto Repair (1976)

251 W. Valley View Rd.
381W23D200 and -201
Talent Truck Stop (1985 - 2020)

301 W. Valley View Rd.
381W23D100
Chevron Gas Station (2003 - 2020)

S Pacific Hwy
381W25B601 and -701
Gravel Pit (2018)

609 S. Pacific Hwy
381W25B502
Visible RECs from Fire
Green Valley Pump (1991 - 2020)
Auto Repair (1976)

618, 630, 690 S. Pacific Hwy
381W25B2800, -2801, and -2803
Visible RECs from Fire
[-2803] Miles Automotive (2020)
Auto Repair (2009 - 2019)
[-2801] Auto Repair (2006 - 2014)

1120 S. Pacific Hwy
381W25D1000
Visible RECs from Fire
Heavy Equipment Service, Rental, Sales (1981 - 2020)
Auto Repair, Sales, Parts (1971)

1407 S Pacific Hwy
381W25DB600
Visible RECs from Fire
BT Landscape Supply

717 S. Pacific Hwy
381W25B800
Logging Center (1971 - 1976)

805 - 809 S. Pacific Hwy
381W25BD100 and -200
-100: DS Auto Repair (2020)
Auto Repair (1971)
-200: Auto Repair, Manufacturing (1976 - 1991)

821 S. Pacific Hwy
381W25BD400
Pinnacle Analytical (2020)

1007 S. Pacific Hwy
381W25BD90000 and -90004
Integrity Iron Works (2020)

1209 - 1309 S. Pacific Hwy
381W25B1400, -1700, and 381W25D900
Visible RECs from Fire
Auto Repair and Vehicle Storage (1974 - 2020)
Gas Station (1971 - 1991)

Historical Land Use of Concern

Land Use Identified in Windshield Survey

Potential Brownfields

City of Medford

City of Phoenix

City of Talent

SR 99 Corridor Focus Area

0 0.15 0.3 Miles

1:12,000 (At original document size of 11x17)

Address
Tax Lot No.
Indication if RECs were Identified during the Windshield Survey
Most Recent Business or Land Use
Historical Land Use

Has been impacted by fire

Has one or more environmental records

Has been impacted by fire and has an environmental record

Stantec

Project Location
State Route 99 Corridor
Talent, OR

Client/Project
RVCOG
State Route 99 Corridor
Brownfield Inventory

Figure No.
4

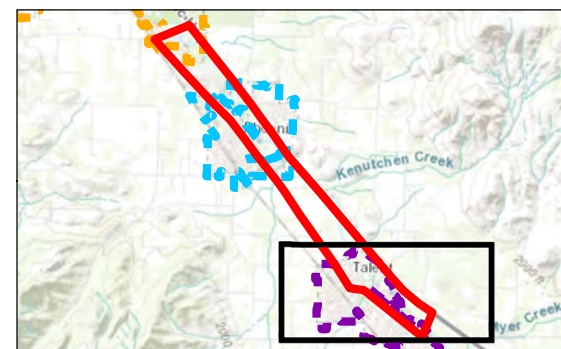
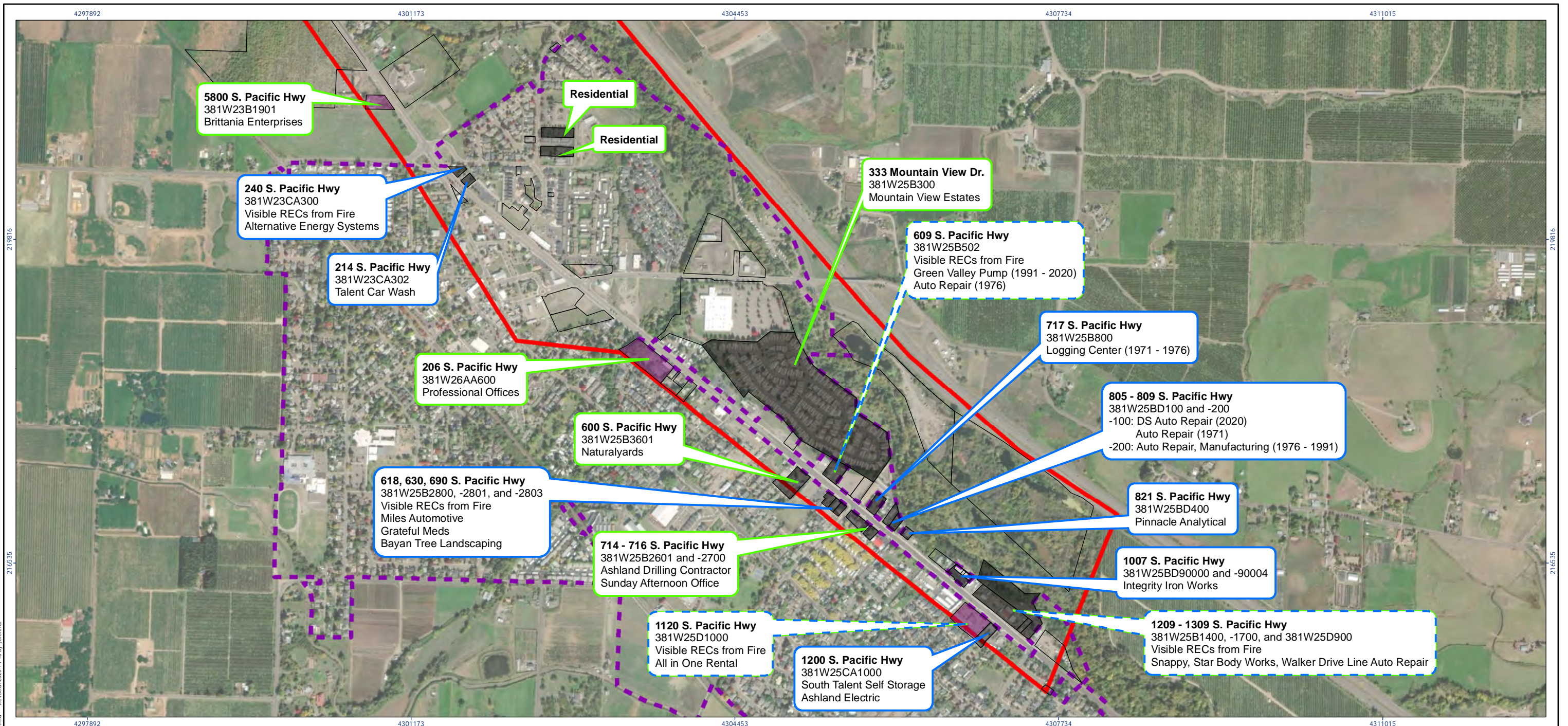
Title
Talent Potential Brownfields
Historical Records Map

Notes

1. Coordinate System: NAD 1983 2011 StatePlane Oregon South FIPS 3602 Ft Intl

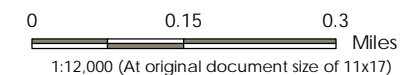
2. Base features produced under license with the Ontario Ministry of Natural Resources © Queen's Printer for Ontario, 2013.

Disclaimer: Stantec assumes no responsibility for data supplied in electronic format. The recipient accepts full responsibility for verifying the accuracy and completeness of the data. The recipient releases Stantec, its officers, employees, consultants and agents, from any and all claims arising in any way from the content or provision of the data.



-
- Legend:
- Structures Destroyed in the Fire (Jackson Co Record)*
 - Structures Impacted by Fire (Jackson Co Record)*
 - Potential Brownfields
 - City of Medford
 - City of Phoenix
 - City of Talent
 - SR 99 Corridor Focus Area

* Fire-impacted structures shown on potential brownfield sites only.



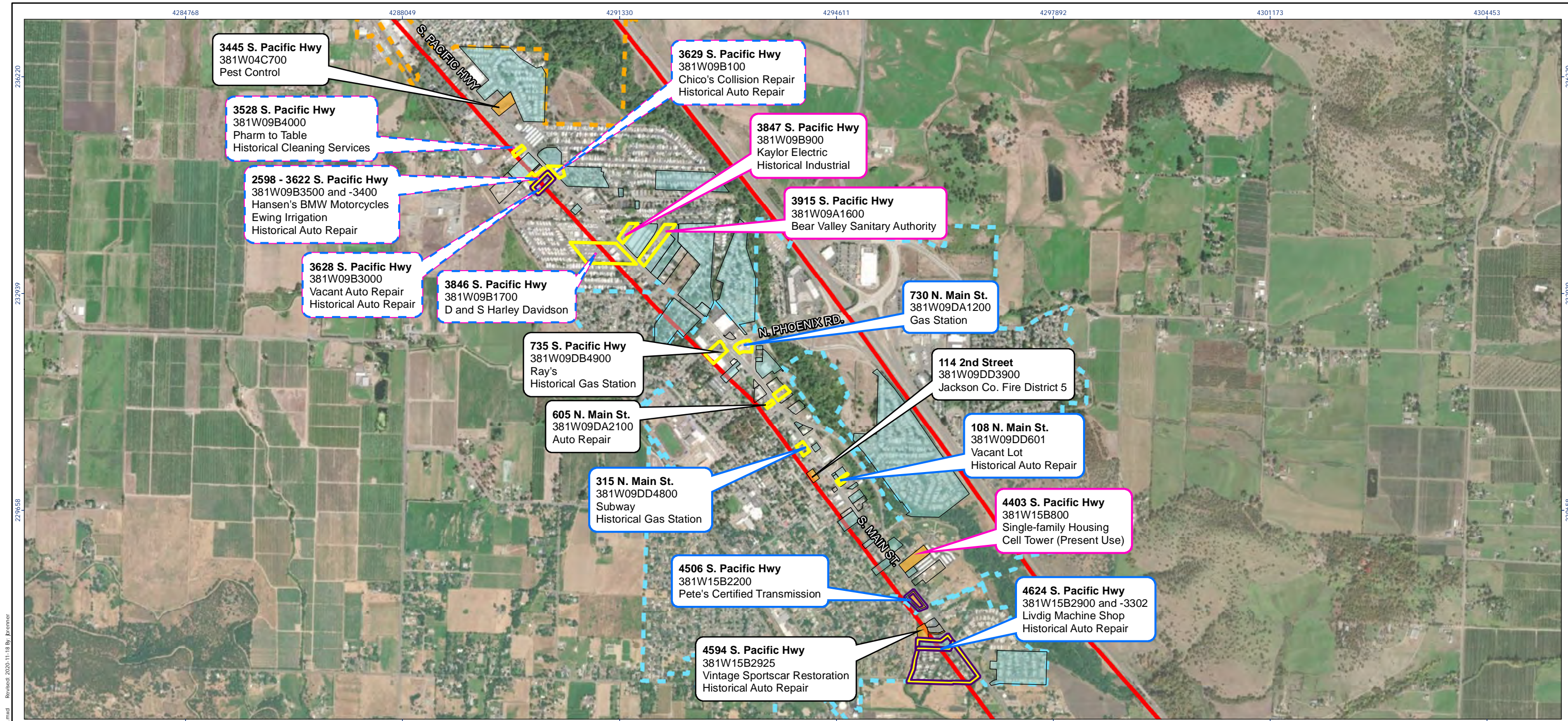
Address
Tax Lot No.
Last Known Business
or Land Use



Project Location	185751393
State Route 99 Corridor	Prepared by JB on 2020-11-17
Talent, OR	Technical Review by LF on 2020-11-17
	Independent Review by GS on 2020-11-17
Client/Project	
RVCOG	
State Route 99 Corridor	
Brownfield Inventory	
Figure No.	
5	
Title	

1.Coordinate System: NAD 1983 2011 StatePlane Oregon South FIPS 3602 Ft Intl
2.Base features produced under license with the Ontario Ministry of
Natural Resources © Queen's Printer for Ontario, 2013.

Disclaimer: Stantec assumes no responsibility for data supplied in electronic format. The recipient accepts full responsibility for verifying the accuracy and completeness of the data. The recipient releases Stantec, its officers, employees, consultants and agents, from any and all claims arising in any way from the content or provision of the data.



Active Environmental Record (LUST/ECSI Record)

Past or Present Petroleum Storage (AST, LUST, UST Records)

Past or Present Hazardous Substance Storage (HSIS Record)

Other Environmental Records*

Potential Brownfields

City of Medford

City of Phoenix

City of Talent

SR 99 Corridor Focus Area

00.20.4Miles

1:18,000 (At original document size of 11x17)

Address

Tax Lot No.

Current/Last Known Business and Environmental Record Associated Business or Land Use

Has a historical land use of concern

Has been impacted by fire

Has a historical land use of concern and has been impacted by fire

Project Location
State Route 99 Corridor
Phoenix, OR
Client/Project
RVCOG
State Route 99 Corridor
Brownfield Inventory
Figure No.
6
Title
Phoenix Potential Brownfields
Environmental Records Map

185751393
Prepared by JB on 2020-11-17
Technical Review by LF on 2020-11-17
Independent Review by GS on 2020-11-17

Notes

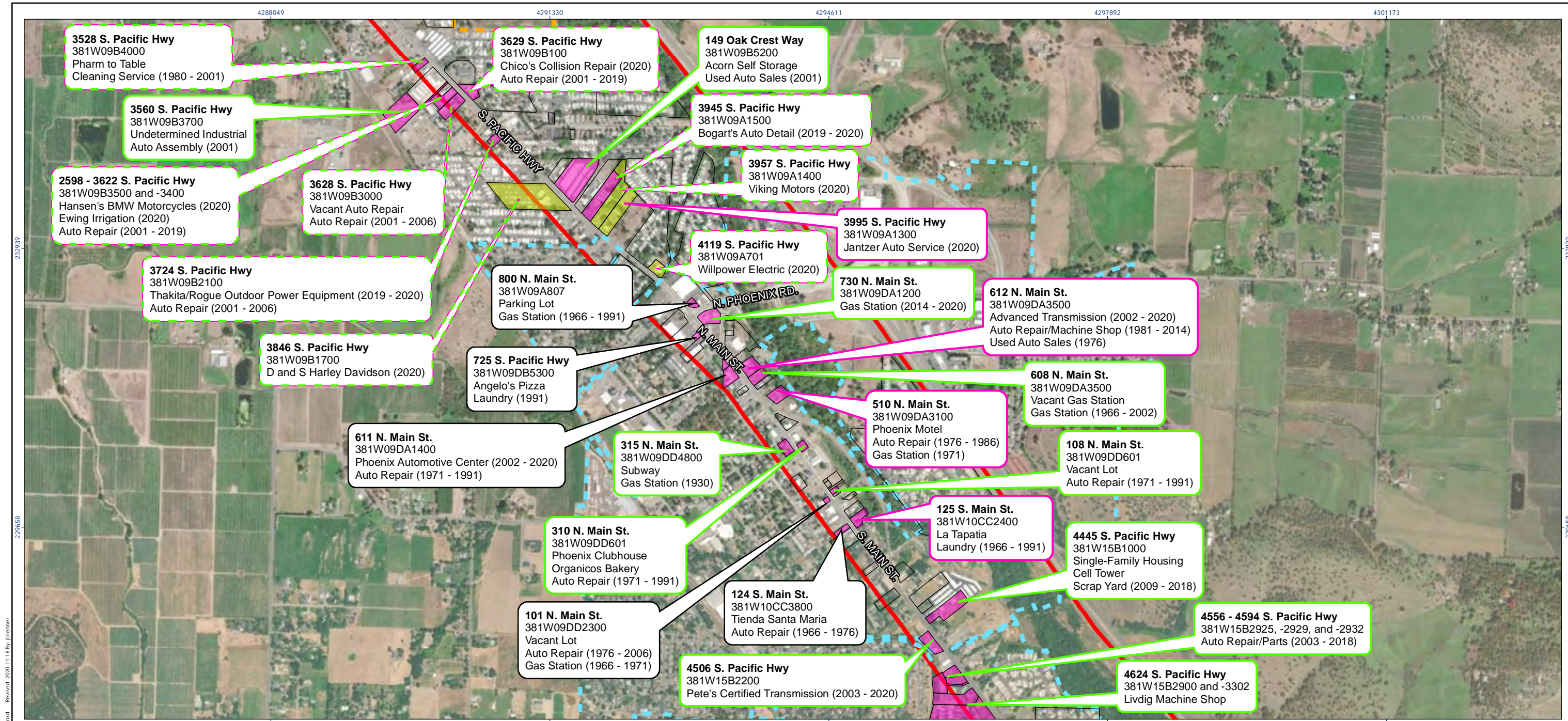
1. Coordinate System: NAD 1983 2011 StatePlane Oregon South FIPS 3602 Ft Intl

2. Base features produced under license with the Ontario Ministry of Natural Resources © Queen's Printer for Ontario, 2013.

Disclaimer: Stantec assumes no responsibility for data supplied in electronic format. The recipient accepts full responsibility for verifying the accuracy and completeness of the data. The recipient releases Stantec, its officers, employees, consultants and agents, from any and all claims arising in any way from the content or provision of the data.

*Other records in this map are from the following federal databases: AIRS, BROWNFIELD, ECHO, ERNS, FRS, ICIS, MRDS, NPDES, PADS, PCSR, RCRA, SPILLS, VCP

Phoenix Potential Brownfields
Environmental Records Map



Historical Land Use of Concern

Land Use Identified in Windshield Survey

Potential Brownfields

City of Medford

City of Phoenix

City of Talent

SR 99 Corridor Focus Area

00.150.3

Miles

1:14,000 (At original document size of 11x17)

Address

Tax Lot No.

Indication if RECs were Identified during the Windshield Survey

Most Recent Business or Land Use

Historical Land Use

Has been impacted by fire

Has one or more environmental records

Has been impacted by fire and has an environmental record

Project Location

State Route 99 Corridor

Phoenix, OR

Client/Project

RVCOG

State Route 99 Corridor

Brownfield Inventory

Figure No.

7

Title

Phoenix Potential Brownfields

Land Use of Concern Map

185751393

Prepared by JB on 2020-11-18

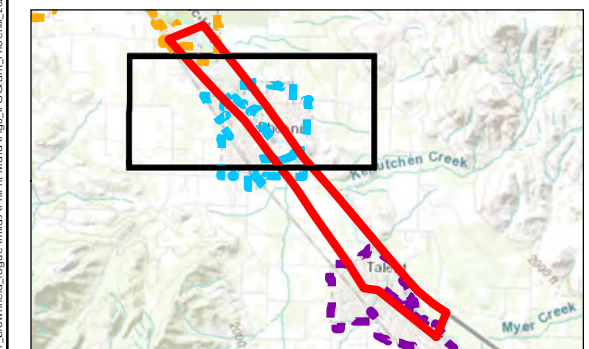
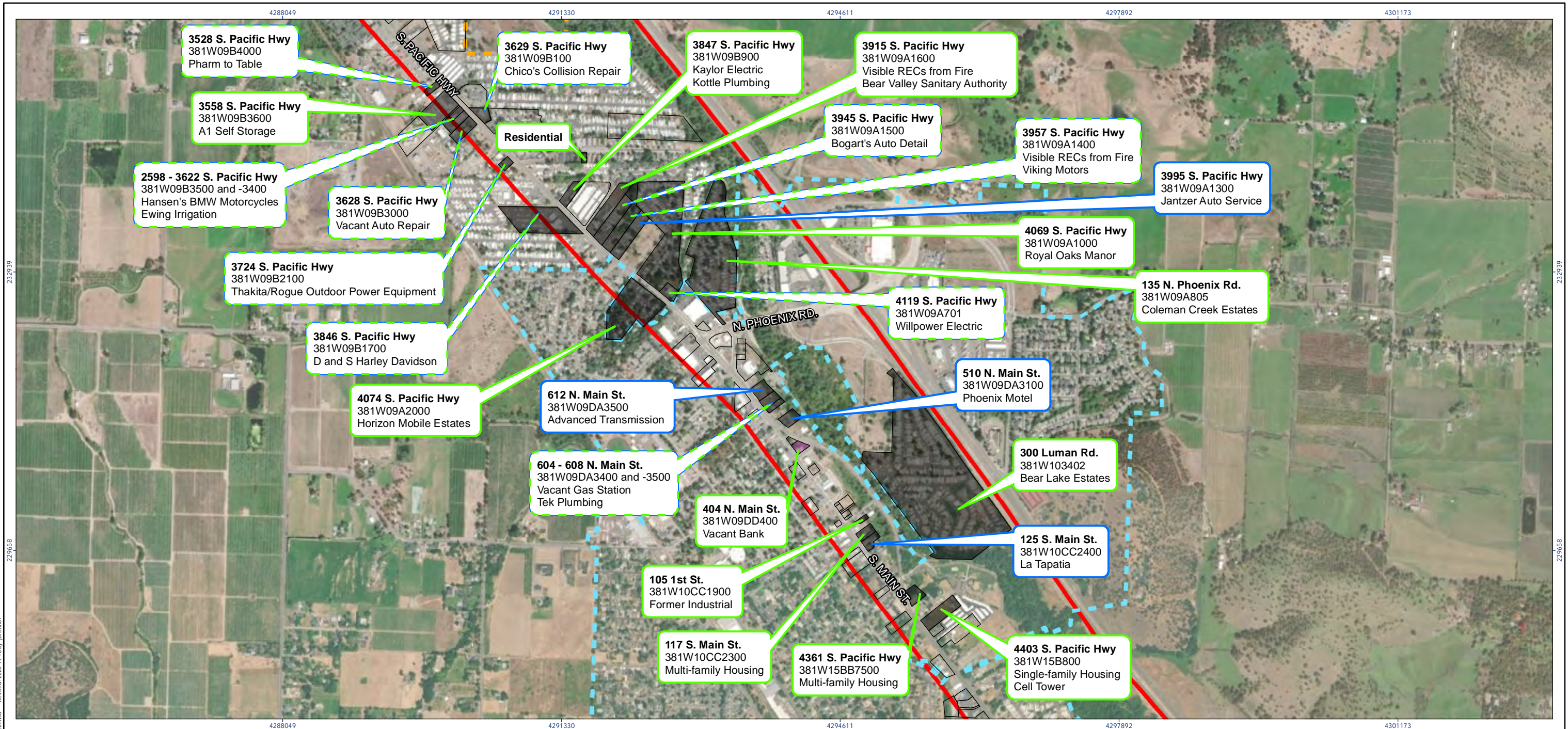
Technical Review by LF on 2020-11-18

Independent Review by GS on 2020-11-18

1. Coordinate System: NAD 1983 2011 StatePlane Oregon South FIPS 3602 Ft Intl

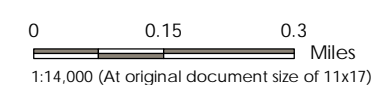
2. Base features produced under license with the Ontario Ministry of Natural Resources © Queen's Printer for Ontario, 2013.

Disclaimer: Stantec assumes no responsibility for data supplied in electronic format. The recipient accepts full responsibility for verifying the accuracy and completeness of the data. The recipient releases Stantec, its officers, employees, consultants and agents, from any and all claims arising in any way from the content or provision of the data.



- Structures Destroyed in the Fire (Jackson Co Record)*
- Structures Impacted by Fire (Jackson Co Record)*
- Potential Brownfields
- City of Medford
- City of Phoenix
- City of Talent
- SR 99 Corridor Focus Area

* Fire-impacted structures shown on potential brownfield sites only.



Address
Tax Lot No.
Last Known Business
or Land Use

- Has a historical land use of concern
- Has one or more environmental records
- Has a historical land use of concern and an environmental records



Project Location
State Route 99 Corridor
Phoenix, OR
Client/Project
RVCOG
State Route 99 Corridor
Brownfield Inventory
Figure No.
8
Title

Phoenix Potential Brownfields Fire-Impacted Structures Map

Notes
1. Coordinate System: NAD 1983 2011 StatePlane Oregon South FIPS 3602 Ft Intl
2. Base features produced under license with the Ontario Ministry of Natural Resources © Queen's Printer for Ontario, 2013.

Disclaimer: Stantec assumes no responsibility for data supplied in electronic format. The recipient accepts full responsibility for verifying the accuracy and completeness of the data. The recipient releases Stantec, its officers, employees, consultants and agents, from any and all claims arising in any way from the content or provision of the data.