

Education and Outreach Report Highlights - January 2023 TMDL and Stormwater Meetings

Stream Smart (TMDL and Stormwater)

- Quarterly meeting held on December 21st (*Agenda summary below*)
 - *Activities Update*
 - *Web updates – Major updates to the sites (formatting, content). 480 Visitors. 1704 Facebook and Instagram.*
 - *Salmon Watch/Fry Release ODFW*
 - *Program completed first week of November (1,260 students)*
 - *Fry release plus SW – over 200 participants, press release – Onsite media*
 - *Coordinating with North Mountain Park for future classes. Current plan is to work toward having up to 3 sessions at NMP. 30 ish students. 3 stations. New Modules – stormwater and cultural/tribal*
 - *Post program debrief*
 - *Illinois Expansion?*
 - *New Modules*
 - *Self-directing stations*
 - *New activities – Salmon Game*
 - *Spring?*
 - *MOA/MOU with Jackson SWCD*
 - *Adopt-A-Greenway*
 - *Volunteer planting – OSU Extension (December 16th)*
 - *Fire Monitoring*
 - *OSU Extension Student Watershed Assessment Team (SWAT)*
 - *Networking and Expansion*
 - *Blog posts*
 - *Articles and Press*
 - *New Items*
 - *Adopt A River – Rogue*
 - *Support Illinois Valley Clean up*
 - *Spring 2023 Events*
 - *Events*
 - *Earth Day*
 - *Clean-ups (April and May)*
 - *Volunteer Plantings*
 - *Living on Your Land*
 - *Plans for 2023*
 - *Pledge link fixed – Under contract*
 - *EPSC Brochure – Final?*
 - *Brochure Targets*
 - *Articles*
- *Articles , Web postings, and blogs (Examples)*

Education and Outreach Report Highlights - January 2023 TMDL and Stormwater Meetings

- Sensitive Salmon in the Creek (issue with dams)
- Bear Creek Restoration, TMDL restoration programs, and the Bear Creek Restoration Initiative (BCRI)
- BCRI
- Bear Creek Greenway Guide Update and App (BCGG)
- Events – GP clean up Dec 2nd, Illinois Nov 23rd, Salmon Talks
- Salmon Watch
- Emerald Ash Borer
- Volunteer Events – Stream Smart Volunteers and Adopt-A-Greenway
 - Pollinator Maintenance as part of Clean-up activities
 - Pollinator planting with OSU Extension (December 16th)
 - Willow Staking (Late Winter/Spring)
- Coordination Meetings
 - Quarterly SOREEL Meeting (January 13th)
 - North Mountain Park (December 20th & January 18th)

NPDES Phase II

- EPSC Brochure
 - Final edits under discussion.
- Brochure Distribution ongoing
- Tracking of implementation activities using survey 1-2-3
- Clean Rivers Coalition Meeting tomorrow.

TMDL

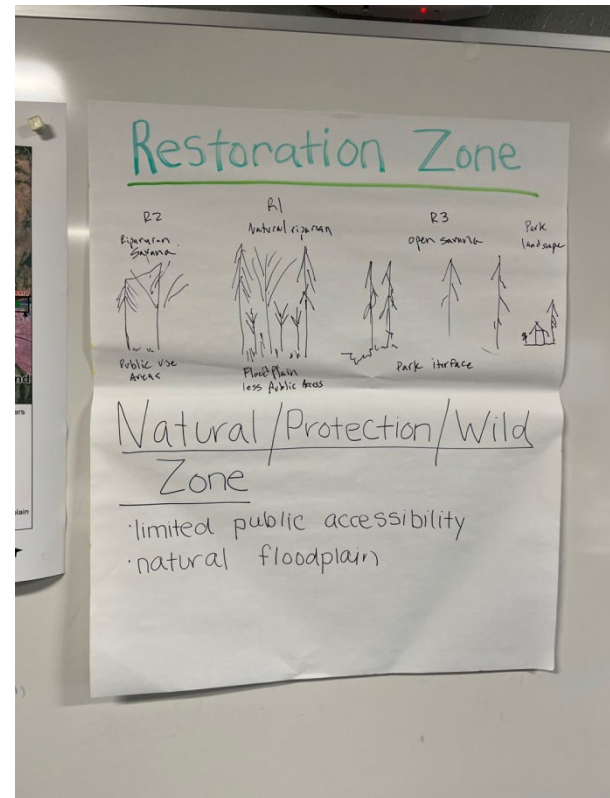
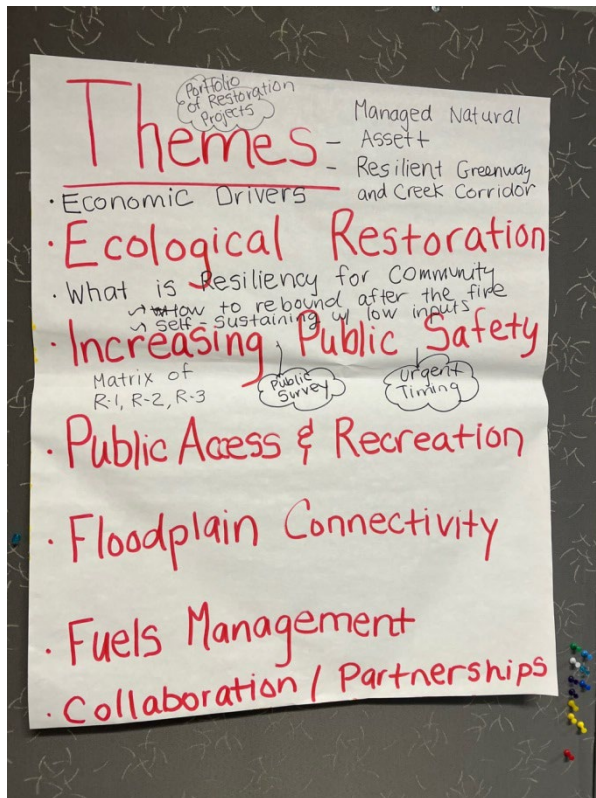
- Hot Spots/Calls of Concern/investigations
 - Lone Pine Creek – Medford
 - Foam (January)
 - “Black Water” in White City

Education and Outreach Report Highlights - January 2023 TMDL and Stormwater Meetings



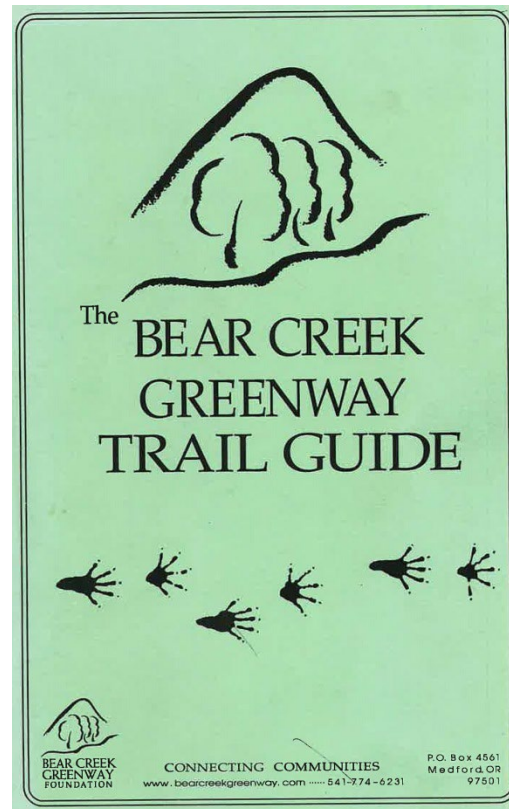
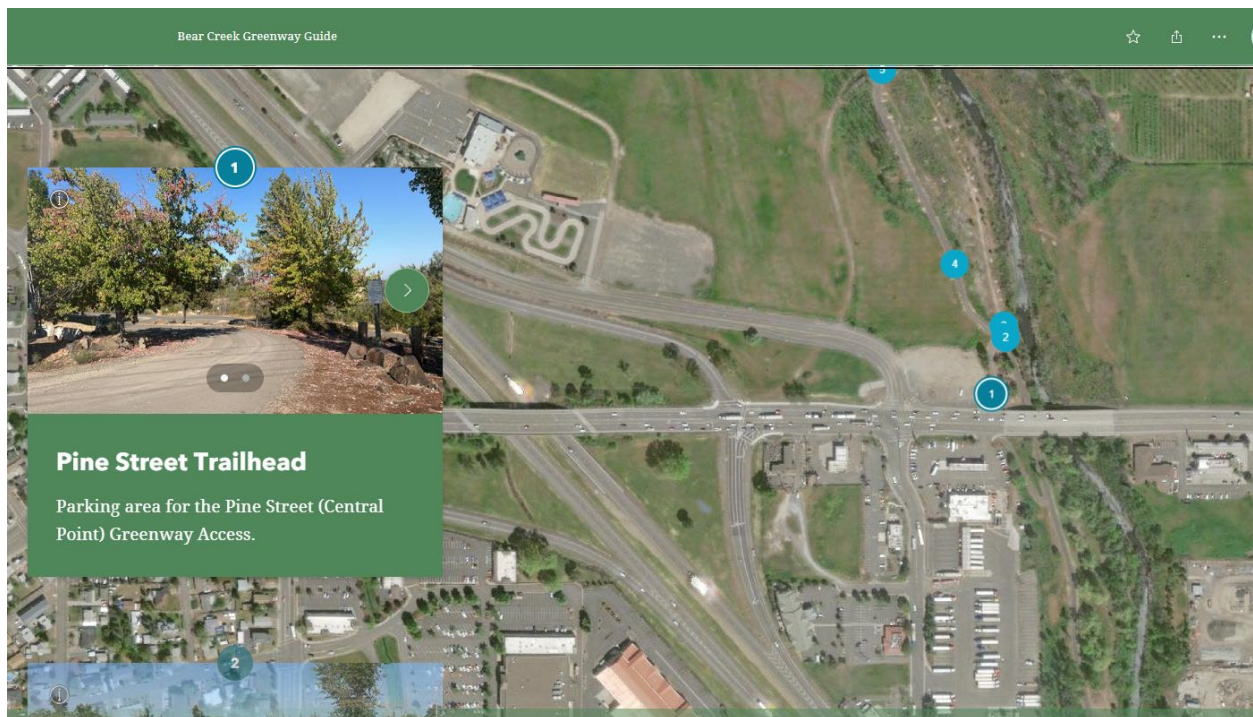
- Monitoring
 - Monthly Stream Monitoring (TMDL)
 - December 22nd – TMDL Run
 - Storm Drain
 - December 30th (Storm event)
 - Alameda Fire Monitoring
 - December 30th, 2022
 - Up and Downstream of the fire. 3 storm drains.
 - Watershed Patrols (White City)
- Coordinating Meetings
 - CWMA
 - BCRI (First Wednesday of the Month)- Coordinator
 - Stakeholder Engagement
 - Pollinator workgroup
 - Restoration
 - November 4th with Emergency Managers and Fire Districts (Overlapping restoration with public safety)
 - EPA Technical Assistance Project

Education and Outreach Report Highlights - January 2023 TMDL and Stormwater Meetings



Education and Outreach Report Highlights - January 2023 TMDL and Stormwater Meetings

- Bear Creek Greenway Guide



Education and Outreach Report Highlights - January 2023 TMDL and Stormwater Meetings



Salmon Watch Program Summary Fall 2022

Another Successful Year in the Books!

With some continuing challenges including limited hours for bus drivers for some districts, and instructor shortage, and cancellations, we provided field trips over seven weeks, bringing students outdoors to learn about their local watersheds. Thanks to funding from the Jackson Soil & Water Conservation District, Central Point Rotary, and contributions from the water quality programs of local cities (Jacksonville, Ashland, Phoenix, Talent, Medford, Central Point, Grants Pass) and counties (Jackson and Josephine) as well as fourteen additional partner organizations we were able to provide no-cost field trips to students in grades 3rd-8th from nine school districts and five private/charter schools in the Rogue basin. Collaboration and partnership make it happen.

We could not do it without your support. Thank you!

of students served: over 1260

of schools participating: 19

**# of individual instructors contributing:
24**

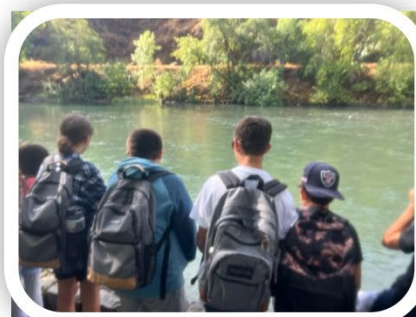
Students learning about the importance of healthy riparian areas



Students learn at four stations:

- Salmon Biology
- Riparian Ecology
- Water Quality
- Macroinvertebrates

Coordinating agencies:



Students observing salmon and salmon behavior at McGregor Park

Thank you to our Salmon Watch Partners!

