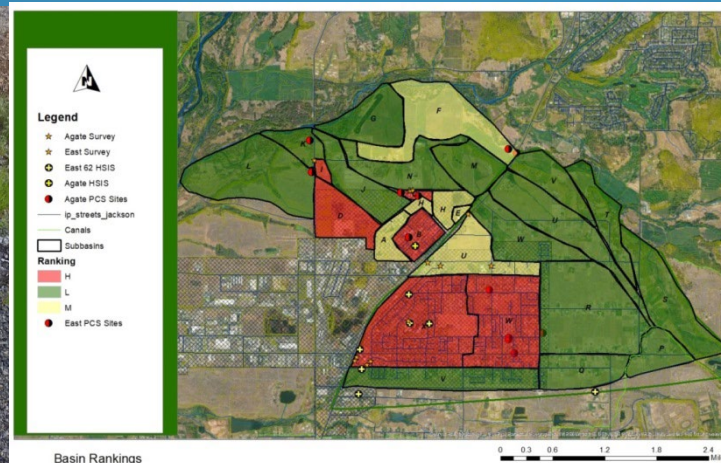


Spill Prevention and Response Planning Project Overview- Hazard Assessment

June 30th, 2022

Greg Stabach
Amie Siedlecki

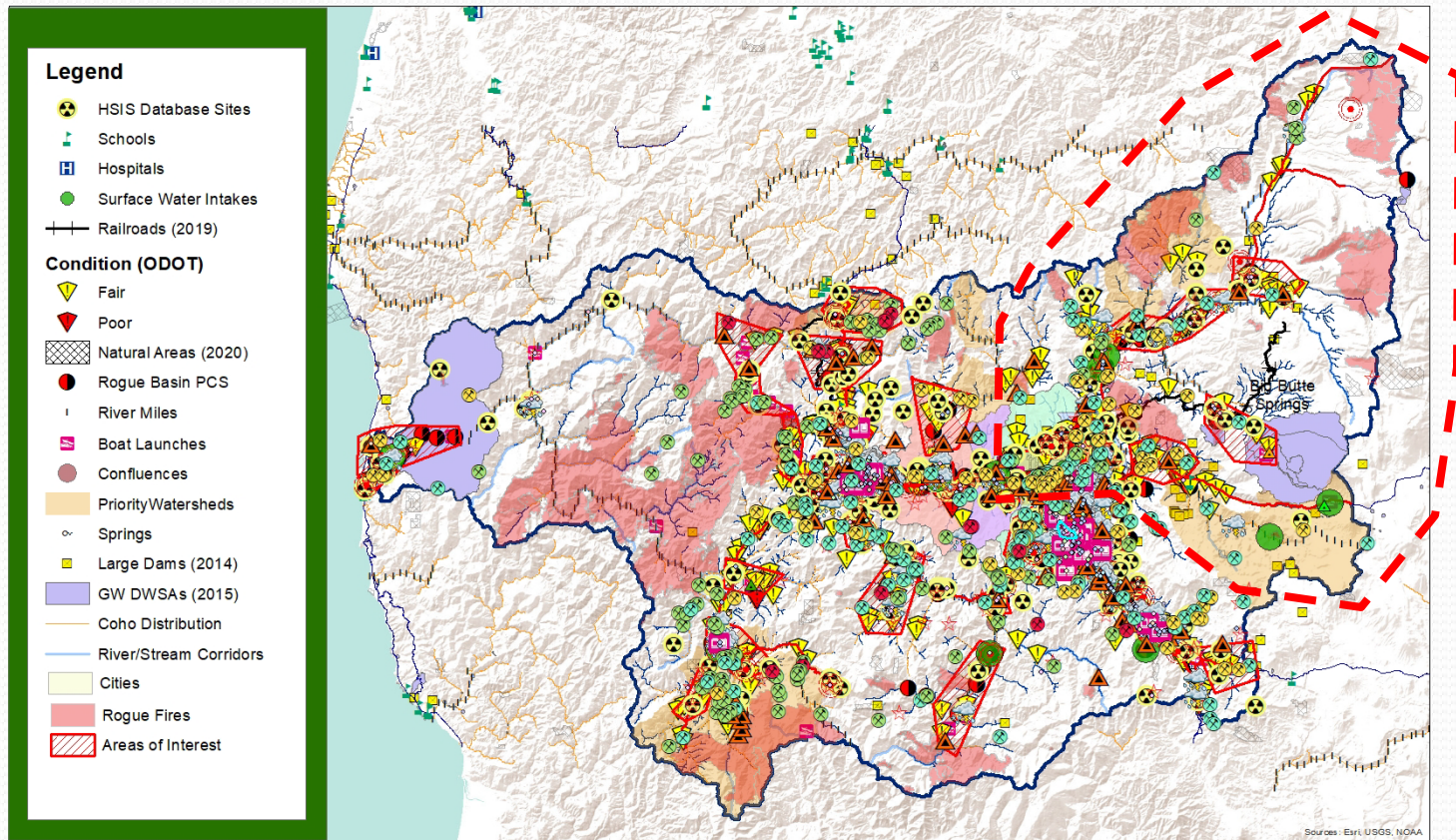
Rogue Valley Council of Governments



Presentation Overview

- Project Overview
 - Work Tasks
 - Concept Model/Plan Format
- Risk Assessment
 - Data Evaluated
 - Results
- At Risk Resources

Project Area – Red GRP Pilot Area



Spill Response Plan/Geographic Response Plan Areas of Interest and Hot Spots Work Map - May 2022

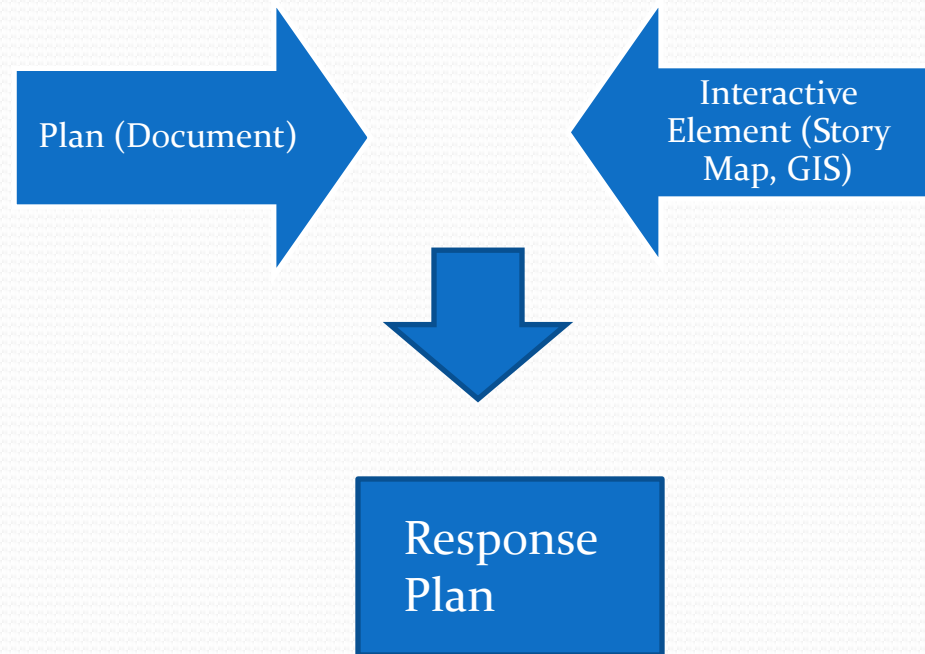


Work Tasks

- 1. Identify Gaps and Gather Spatial Data***
- 2. Conduct an Emergency Response and Hazard Assessment and GIS Risk Analysis***
- 3. Hold Stakeholder Workshop and Identify Critical At-Risk Resources***

Recommended Models and Format

- Lower Clackamas River
- EWEB



Concept - McKenzie GRP (EWEB)

Strategy Number 1 Wildish Bridge Area



Response Objectives:

- Protection
- Collection

Critical Resources to be Protected:

- Western Pond Turtle habitat in side channels near boom placement area.

Location:

- Wildish Bridge area is located north of Eugene approximately 0.75 miles north of Wildish sand & gravel operations.
- 44° 07' 02"N / 123° 04' 37"W
- USGS River Mile 5.0; Measured River Mile 1.4

Description of Response Tactics:

- Deploy 200 feet and 450 feet of 4x6 solid containment boom across side channel inlets on south bank of river to protect Western Pond Turtle habitat from spilled product.

- Deploy 950 feet of 4x6 solid containment boom (approximately 2,000 feet down river of protection boom) at an angle of 22-30 degrees NE from the spilled product collection and recovery area (south bank).
- At product collection and recovery area protect shoreline with additional solid containment boom, sorbent boom/pads and poly sheeting. Collect product with oil recovery skimmer and pump into waste pools or other temporary storage unit.

Access Areas:

- Closest river access points are Armitage State Park boat ramp on the south bank and the Coburg Access boat ramp on the north bank located 1.7 miles up river or east of the boom placement area (USGS river mile 7.2 or measured river mile 3.1). These boat ramps are large and well maintained.
- The north bank can be easily accessed from a dirt road that leads to the north side of the river (Take Coburg Road north of the town of Coburg and head south on Coburg Bottom Loop, continue straight on Funke Road and near end of Funke Road head west on a dirt road for access to one boom placement area or head straight to access the north bank farther east).
- Access to the south bank can be achieved behind the sand and gravel operations.

Staging Areas:

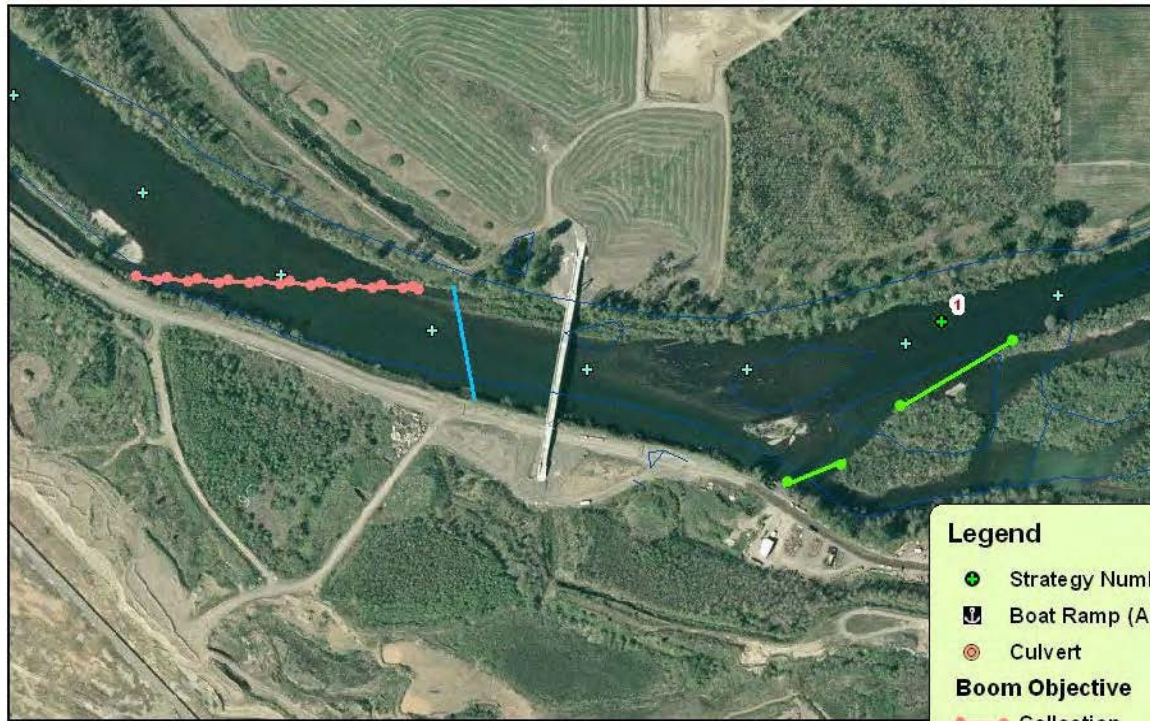
- Armitage State Park and the McKenzie Watershed Council office at Armitage Park is a good equipment staging area with ample space for equipment, boat ramps, parking, electricity, water, and restrooms. Armitage State Park is 1.7 miles from boom placement area via boat and 1.9 miles via vehicle (Locke Road to Coburg Road and north to Armitage State Park).
- Closest equipment warehouse is Lane County Public Works and Lane County Sheriff's Office facilities at 3040 North Delta Highway (approximately 1.75 miles south of boom placement area).

Equipment Needs:

1,600 feet solid containment boom (w/4-5 tow bridles)
 Boom Deployment Equipment and 9 buoys
 Multiple Fence Posts w/hammer (used to anchor A, B, & C lines for boom deployment)
 500 feet sorbent boom (shoreline protection)
 500 feet solid containment boom (shoreline protection)
 200 feet x 50 feet of Poly sheeting (shoreline protection) and decon area
 12 bales sorbent pads
 Compressor
 Chemical Pump
 Generator
 1 Jet boat
 Decon equipment
 Pressure washer w/pump
 3-4 Decon waste pools within containment berm
 Oil Recovery Drum Skimmer (product recovery)
 13,000 feet of Rope (3/8" poly rope)

Watercourse Description:

- 1.4 m³/sec during high flow
- No data on depth
- River width = 300-325 feet
- No data on river bottom material



Legend

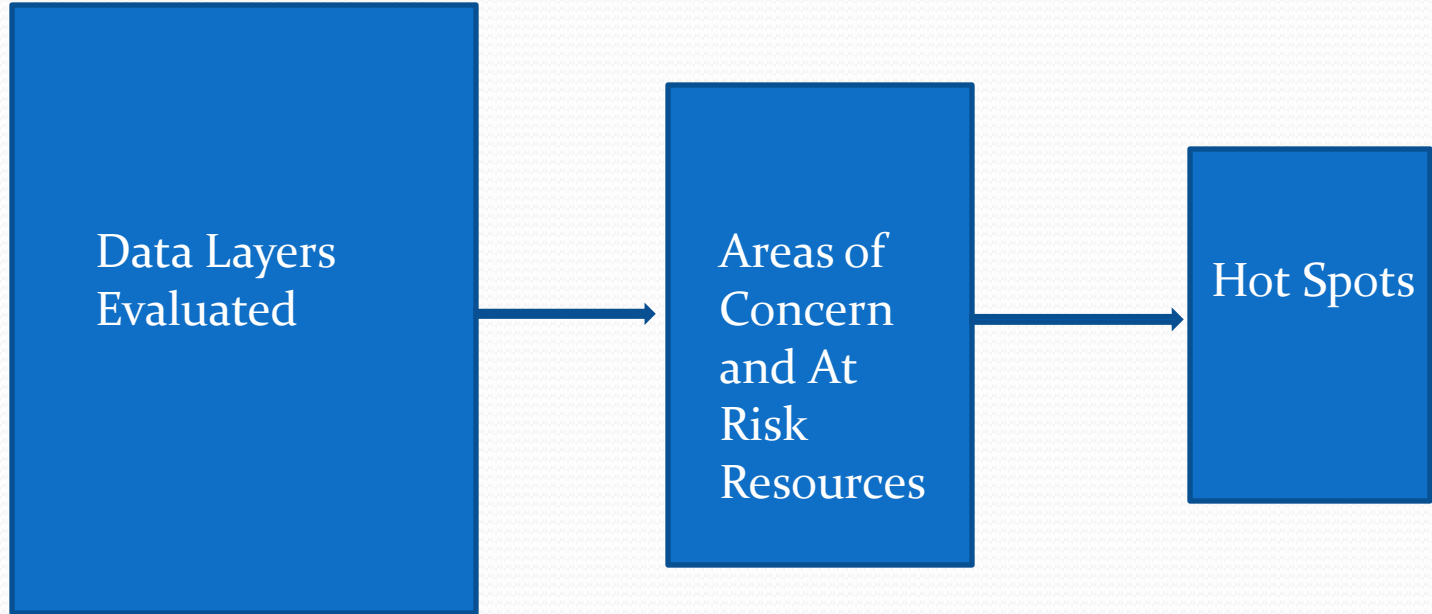
- Strategy Number
- Boat Ramp (Access)
- Culvert
- Boom Objective**
- Collection
- Diversion
- Protection
- Static Line
- River Mile (1/10th)
- Water

Strategy 1: Wildish Bridge Area

Hazard Assessment and GIS Risk Assessment Overview



Inventory Potential Sources of Contamination



Hazard Assessment Layers

- Hazardous Substance Information System Data (HSIS)
 - Fire Marshall Data
- Potential Contaminant Sources (PCS)
- Water Crossings (roads, train tracks)
- Accidents – traffic, train derailments, and spills
- Proximity to Cultural and Historic Resources

Results

- Major Transportation Corridors (especially near water)
 - Roads and Bridges
 - Railroads
- Industrial Areas (White City)
- Urban Areas
- Other Spill Risks
 - Construction activities using heavy equipment on or near stream banks
 - System failures (Clackamas-dam turbine mechanical failures)

At Risk Resources - Draft

- Water Intakes
- Critical Infrastructure - (water systems, sewers, roads, bridges, dams, hospitals, schools)
- Fish and Wildlife Habitat
- Cultural and Historic Resources
- Water Resources – Streams, wetlands, rivers, lakes

Questions?





Notification for Hazardous Substance Releases or Oil Spills

Federal Notification Center - National Response Center	(800) 424-8802*
State Notification Center - Oregon Emergency Response System (OERS)	(800) 452-0311*

U.S. Environmental Protection Agency (EPA)	
Oregon Ops Office (Richard Franklin)	(503) 326-2917
RCRA/CERCLA Hotline	(800) 424-9346
Region 10 - Spill Response (Stephan Ball)	(208) 378-6510
Region 10 - Press Contact (Mark MacIntyre)	(206) 553-7302

National Oceanic & Atmospheric Administration (NOAA)	
24-Hour HAZMAT	(206) 526-4911*
National Weather Service (Medford)	(541) 773-1067

Other Federal Agencies	
U.S. Department of the Interior (Portland)	(503) 326-2489

Oregon State	
Dept. of Agriculture (Southwest Oregon Region)	(541) 414-8797
Dept. of Environmental Quality (DEQ) (Medford)	(541) 776-6010
Dept. of Fish & Wildlife (ODFW) (Central Point)	(541) 826-8774
Dept. of Forestry (Southwest District)	(541) 664-3328
Dept. of Transportation (ODOT) (White City)	(541) 774-6299
Oregon Health Authority	(503) 704-1174
Oregon Parks & Recreation (Headquarters Office)	(503) 986-0707
Oregon State Police (Central Point)	(541) 776-6236
Oregon Office of the State Fire Marshal - HazMat Team 8	(541) 774-2500

Response Contractors	
Northwest Firefighters (NWFF) Environmental	(800) 942-4614*
Western States Environmental Services, LLC	(541) 770-2482

Local Government	
City of Ashland	(541) 552-2419
City of Central Point	(541) 664-7602
City of Eagle Point - Robert Miller	(541) 826-4212 x 105
City of Gold Hill	(541) 855-1525
City of Grants Pass Water Treatment Plant	(541) 450-6117
City of Grants Pass - Jason Canady, Public Works Director	(541) 450-6110
City of Grants Pass - Adam Smith, WTP Superintendent	(808) 635-0801
City of Medford	(541) 774-2600
City of Rogue River Water Treatment Plant	(541) 582-4401
City of Rogue River - Michael Bollweg, Public Works Director	(541) 415-1117
City of Shady Cove - Tom Corrigan	(541) 878-3757
Jackson County Emergency Management	(541) 774-6035
Jackson County Environmental Public Health Manager - Chad Petersen	(541) 774-7824
Jackson County Fire District #3	(541) 826-7100
Jackson County Fire District #4	(541) 878-2666
Jackson County Fire District #5	(541) 535-4222
Jackson County Sheriff's Office	(541) 774-6800
Josephine County Emergency Management	(541) 474-5300
Josephine County Environmental Public Health	(541) 474-5325
Josephine County Sheriff's Office	(541) 474-5123
Rural/Metro Fire Department	(541) 474-1218
Emergency Communications of Southern Oregon (ECSO)	(541) 245-2205

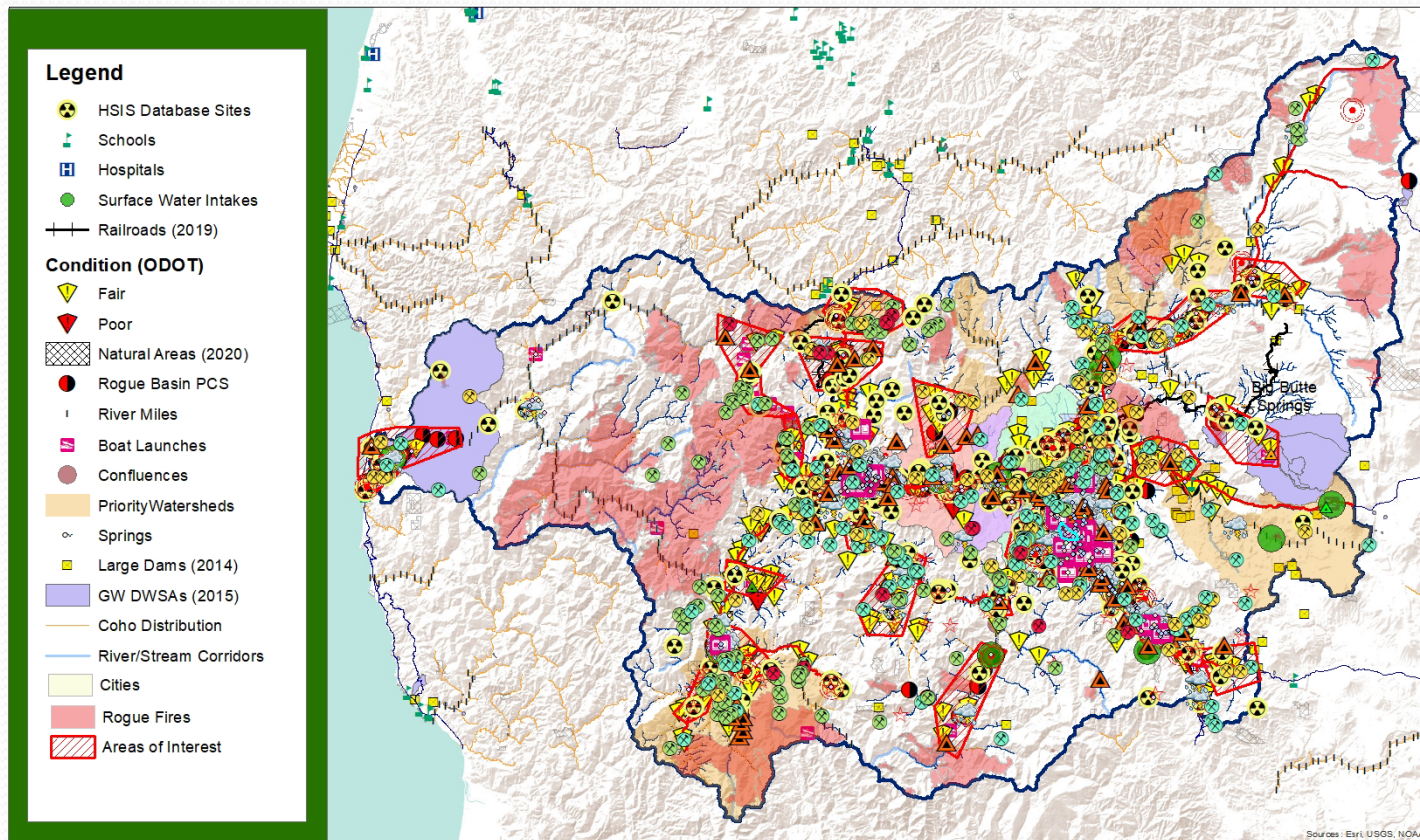
Utilities	
Hiland Water Company - Silas Olson	(503) 554-8333
Medford Water Commission - Ben Klayman, Water Treatment Director	(925) 323-7861
Medford Water Commission - Dan Perkins, Treatment Plant Chief	(541) 941-3951
Medford Water Commission - Craig Harper, Watershed Administrator	(541) 778-1729
Pacific Power	(877) 508-5088
Eagle Point Irrigation District	(541) 826-3411
Grants Pass Irrigation District	(541) 476-2582**
Medford Irrigation District	(541) 899-9913
Rogue River Valley Irrigation District	(541) 773-6127
Talent Irrigation District	(541) 535-1529
Rogue Valley Sewer Services	(541) 779-4186*
Southern Oregon Water Technology, LLC - Debbie Bunker	(541) 499-8041
Union Pacific Railroad	(800) 877-7267*

*Contact numbers staffed 24 hours/day.

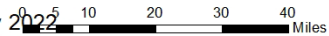
**Listed as the Emergency Number on website.

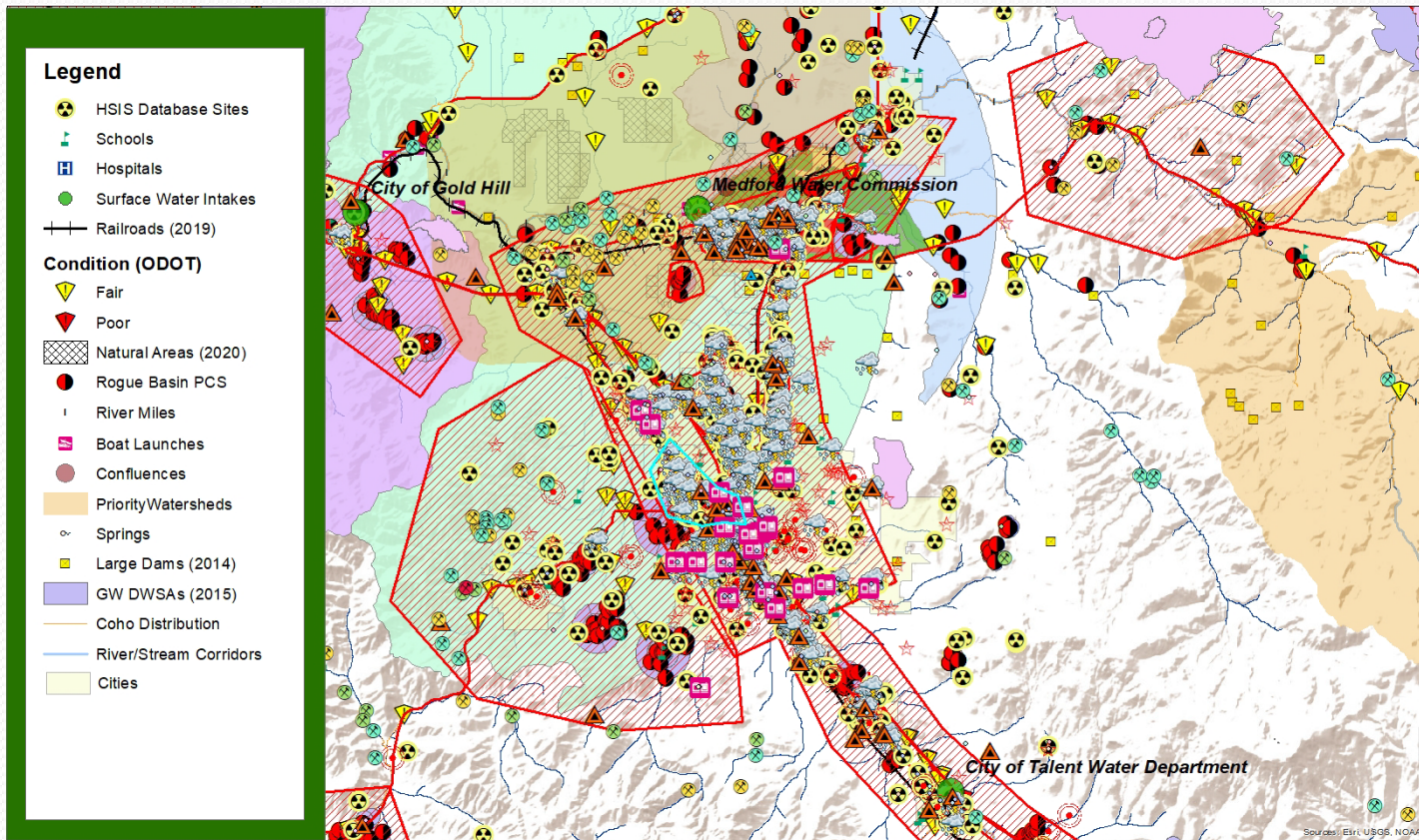
May 24th, 2022

Data Analysis

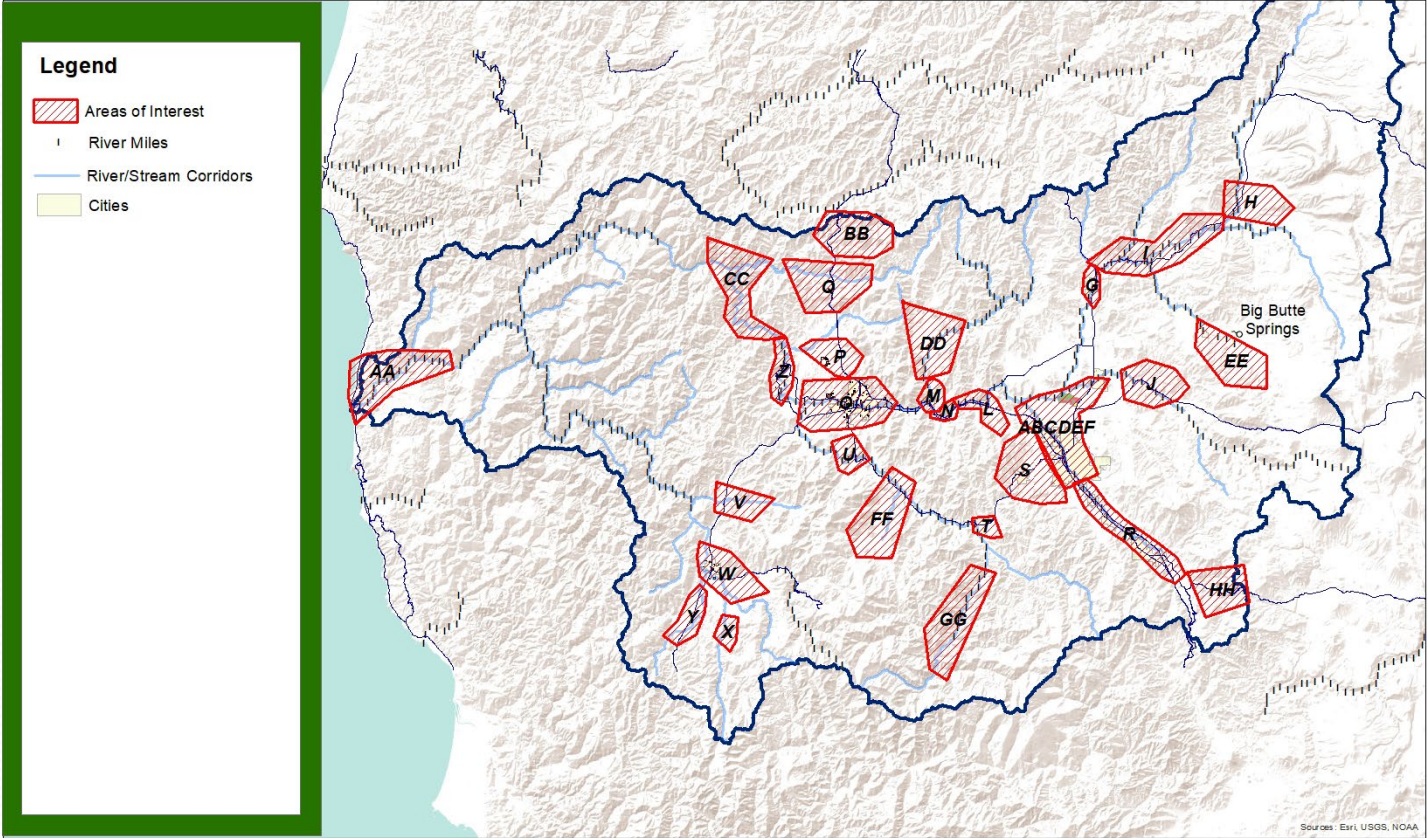


Spill Response Plan/Geographic Response Plan Areas of Interest and Hot Spots Work Map - May 2022

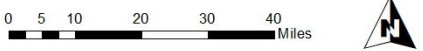




Spill Response Plan/Geographic Response Plan Hot Spots Work Map - May 2022



Spill Response Plan/Geographic Response Plan Hot Spots Work Map - June 2022



	<i>Data Layer</i>	<i>Score</i>	Alternative Score		
			<i>H</i>	<i>M</i>	<i>L</i>
1	Known Contamination Sites (ECSI - C58)	2			
2	Confirmed Leaking Underground Storage Tanks (LUSTs)	2			
3	Underground Storage Tanks	1			
4	Dry Cleaners	2			
5	Active Mining sites (other H, sand and gravel-L)	2	2		1
6	Landfill Site	1			
7	Underground Injection Control	1			
8	General PCS Locations	1			
9	Hazardous Waste Generators	2			
10	Major Outfall Locations	1			
11	HSIS Data	3	3	2	1
12	HAB Advisories	1			
13	Groundwater Drinking Water Source Areas (DWSA)	1			
14	TOC	1			
15	Priority Confluences	1			
16	Priority Watersheds	1			
17	Poor and Fair rated bridges over water	1			
18	Railroads near water	2			
19	DEQ Permit Data	1			
20	Proximity to intakes	1			
21	Proximity to drainage system (storm drain, creek, river)	1			
22	Sensitive aquatic resources (Coho)	1			
23	Other sensitive resources	3	3	2	1
24	Historic Fire Perimeter	1			

Total Possible Score (max)	34
Rank	Score
High	23-34
Med	12 to 22
Low	1 to 11

Data Layer	Score	Alternative Score		
		H	M	L
Known Contamination Sites (ECSI – C58)	2	2		1
Confirmed Leaking Underground Storage Tanks (LUSTs)	2	2		1
Underground Storage Tanks	1			
Dry Cleaners	2	2		1
Hazardous Waste Generators	2	2		1
HSIS Data	3	3	2	1
TOC	3	3	2	1
Drinking Water Source Areas	1			
Bridges over water (poor and fair ranked)	2	2		1
DEQ Permit	2	2		1
Railroads near water	1			
Proximity to intakes	1			
Sensitive Resources	3	3	2	1
Stream Crossings	1			

Total Possible Score (max)

26

Rank	Score
High	17+
Med	9 through 16
Low	1 to 8

Hazard Assessment Layers

- Hazardous Substance Information System Data (HSIS) Fire Marshall Data
- Potential Contaminant Sources (PCS)
- Proximity to water
- Water Crossings (roads, train tracks)
- Drainage areas (natural, storm drains)
- At-Risk Bridges (ratings)
- Priority Confluence Areas (RBP)
- Priority Watersheds (RBP)
- Historic Spills (need – DEQ)

Hazard Assessment continued

- Traffic accidents
- Railroad derailments
(**GAP**)
- WQ Permit Violations
(**GAP**)
- Primary Pollutants in Jackson County
(identified in ERP)
- Priority Infrastructure (protection of) – Water intakes, schools, hospitals, high priority drainage networks
- Preparedness (facilities that don't have safety protocols, safety officers, etc.) (**GAP**)
- Hazard ratings (Partial)

Hazard Assessment continued

- Proximity to Cultural and Historic Resources
(**GAP**)
- Historic Spill Locations
(**GAP**)

Results

- Major Transportation Corridors (especially near water)
 - Roads and Bridges
 - Railroads
- Industrial Areas (White City)
- Urban Areas
- Other Spill Risks

At Risk Resources - Draft

- Water Intakes (DW)
- Critical Infrastructure (drinking water systems, storm drains, sewers)
- Critical Infrastructure (general – roads, bridges, dams, hospitals, schools)
- Springs
- Aquifers
- Fish and Wildlife Habitat (TES-Need, Vernal Pools, Coho)
- Cultural and Historic Resources (Need)
- Social and Economic Resources (Need)
- Stream, Rivers, Lakes, Ponds
- Wetlands
- At Risk Bridges/Road Crossings
- Confluence Areas
- Priority Watersheds