

# TMDL RIPARIAN RESTORATION MAP

## Legend

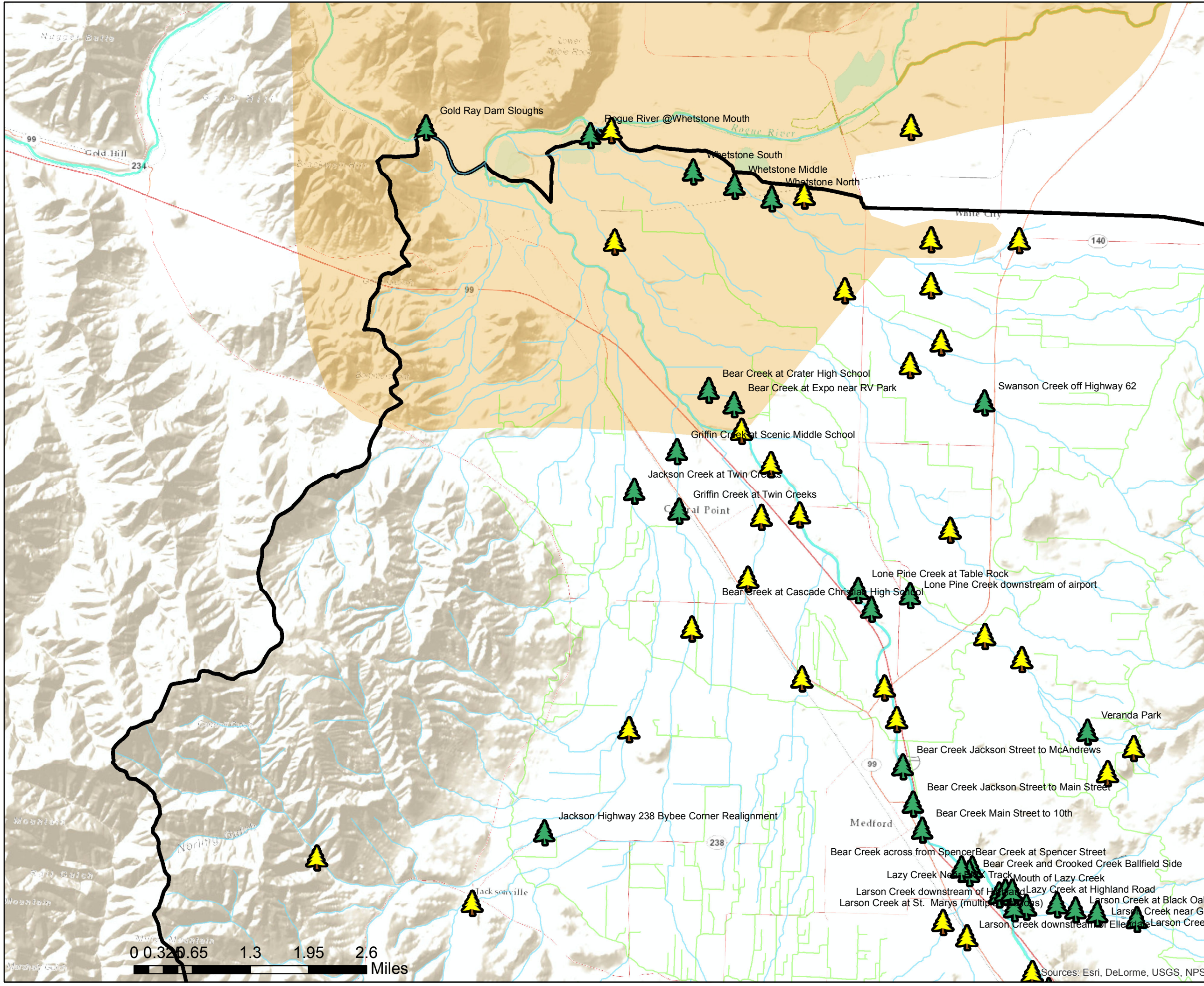
- Confluences
- Rogue Basin Boundary
- River/Stream Corridors
- Priority Corridors
- Priority Watersheds
- Grants Pass Urban Growth Boundary
- 🌲 Potential Restoration Site
- 🌲 Active or Completed Restoration Site
- Canals
- Bear Creek Watershed



## Plate 1: North Section

*Labels are for active or completed projects only.*

June 30th, 2018



Sources: Esri, DeLorme, USGS, NPS,