

Where Does My Water Go?



A Neighborhood Exploration Activity

Activity Summary

In this activity, we will explore what happens to water after it rains and where it goes if it does not soak into the ground (the ground acts as a sponge and a filter).



Questions:

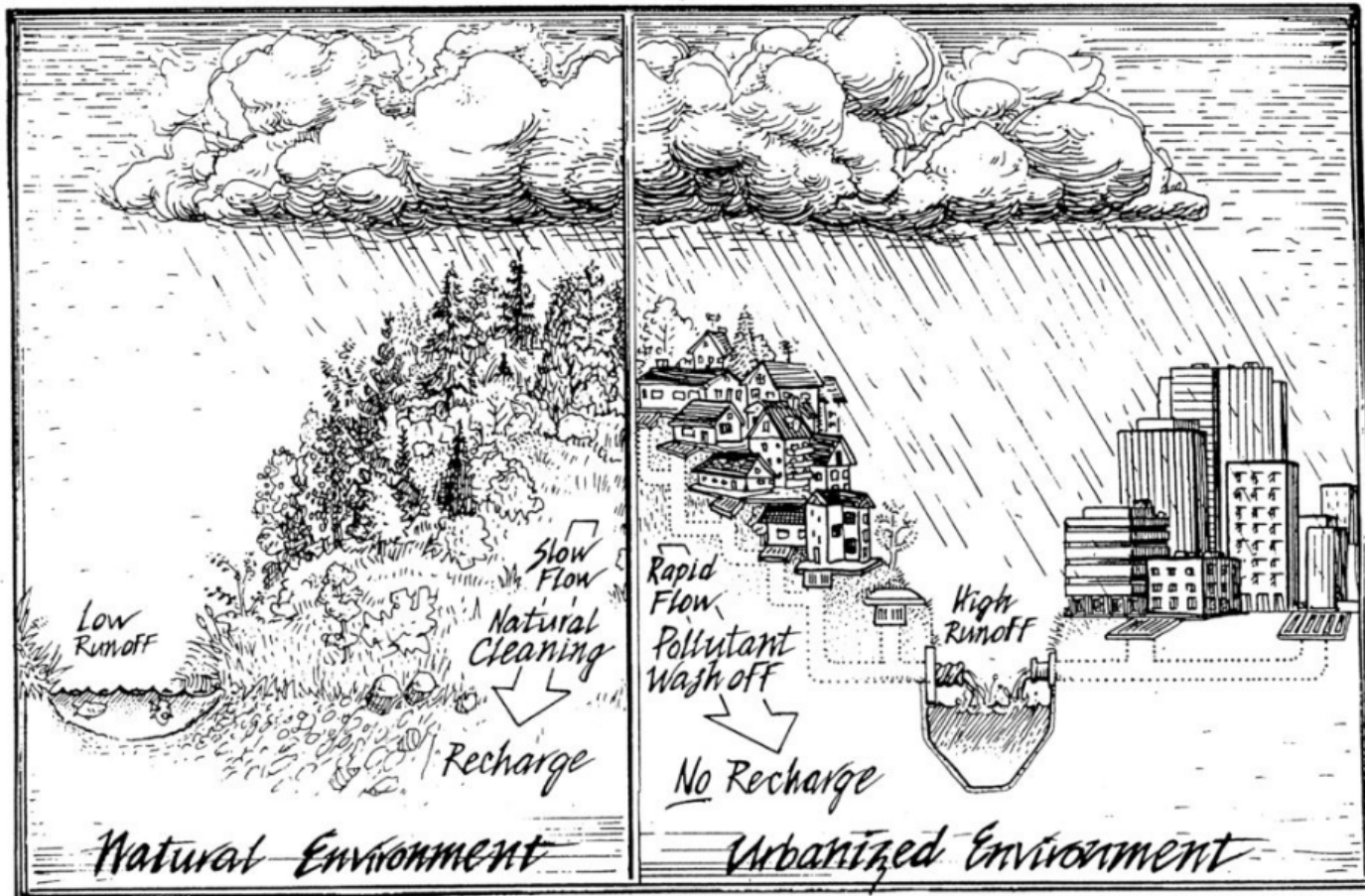
- What is stormwater?
- What is different in relation to rainfall and runoff in a natural environment versus a developed (urban) area?
- What do I have in my neighborhood that might create stormwater?
- If stormwater is just rain or snow, is it bad?
- Does stormwater go to a treatment plant?
- Is something being done to manage stormwater?

What is stormwater?

- Stormwater runoff (stormwater) is flow that is generated from rain or snow that falls on hard surfaces



What Happens When it Rains?

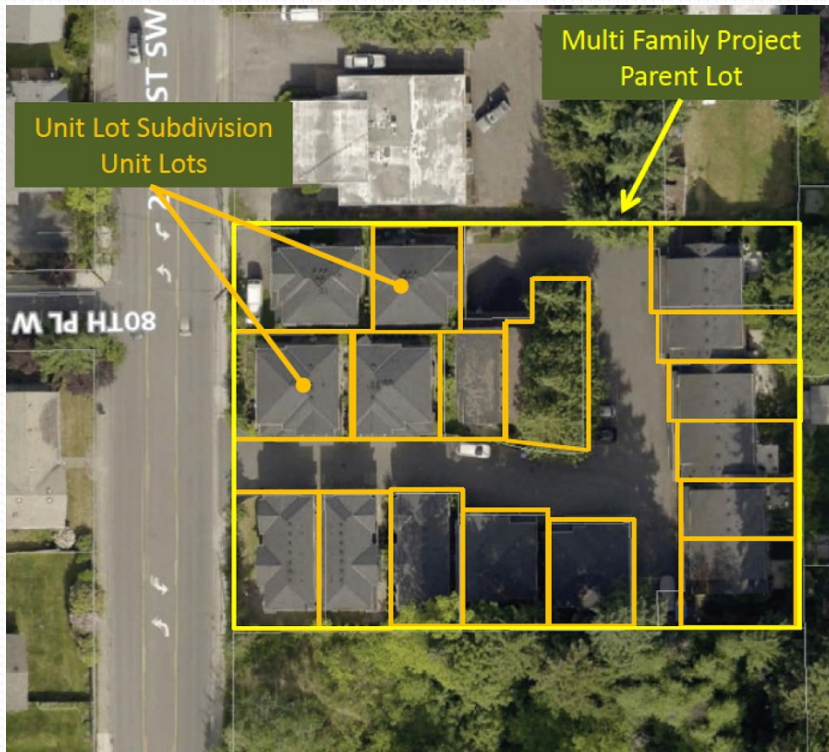


Before

After

What creates runoff?

- Hard surfaces (impervious surfaces) – rooftops, roads

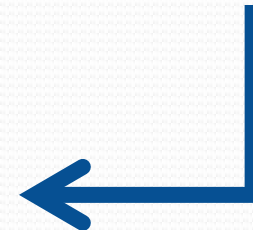


Lawns and other open areas allow water to soak into the ground (infiltrate).

Where does it (runoff) go?



Generally speaking



Is it managed?

- Yes. Stormwater is regulated under the Clean Water Act.
- See if you can find any treatment areas in your neighborhood.
 - Underground treatment devices
 - Swales
 - Wetlands
 - Rain Gardens

Where does the water in my neighborhood go?

